

OF WHEAT & WINDROWS AGRICULTURE AND NATURAL RESOURCES NEWSLETTLER August 2023

Strong Cattle Prices

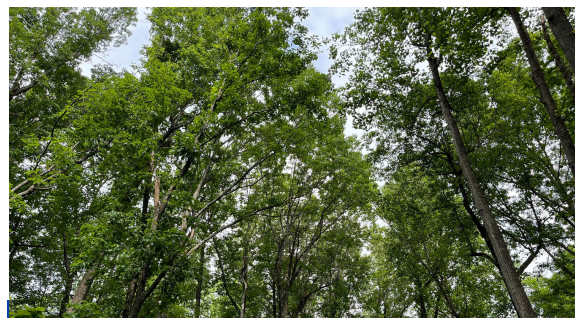
By: Dr. Josh Maples, Mississippi State University

Cattle prices have been on a strong ride in 2023. Many producers will be selling spring-born calves in the coming months and are likely to be much happier with the revenue earned than they were when selling calves during the past few years. Feeder cattle prices in the southeast are up roughly 40-50 percent above year-ago levels and current expectations are for that strength to continue into 2024.

The chart above shows futures contract quotes for all of the currently traded CME contracts. Futures contracts are standardized and each contract terminates on the last Thursday of the contract month. For feeder cattle, one contract is 50,000 pounds and the CME Feeder Cattle Index is used to settle the contract. The CME Feeder Cattle Index is a seven day weighted average calculated using transactions of 700-899 pound steers from a 12-state region in the middle of the U.S. (more info about this index is available at [this factsheet](#)). As an example, the August 2023 contract will terminate on Thursday, August 31st and will settle based on the CME Feeder Cattle Index calculated with transactions from August 25-31.

Since the contracts are standardized and have a set ending date, futures quotes can give insight on price expectations for the rest of 2023 and Spring 2024. Contract prices are higher throughout the fall months before dipping slightly during the first few months of 2024.

Continued on page 2.



In this Issue

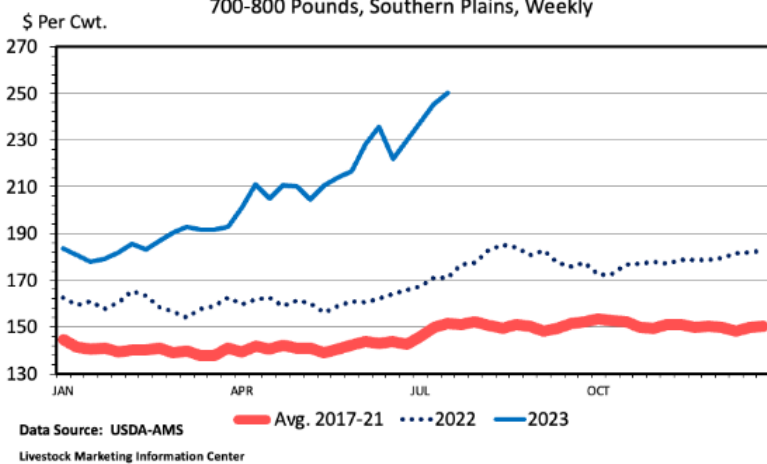
Strong Cattle Prices.....	1-2
Grazing Tips.....	3
CAIP.....	3
Dates to Know.....	4
Cattlemen's Meeting.....	4
Equine Program.....	5
KSU TTT.....	6
Eden Shale Farm Infrastructure Tour.....	6
Beginning Farmer Series..	6
Sausage Making.....	6
Roast Venison.....	7
Dead Animal Removal.....	7
ANR Facebook.....	7
Beef Bash.....	8



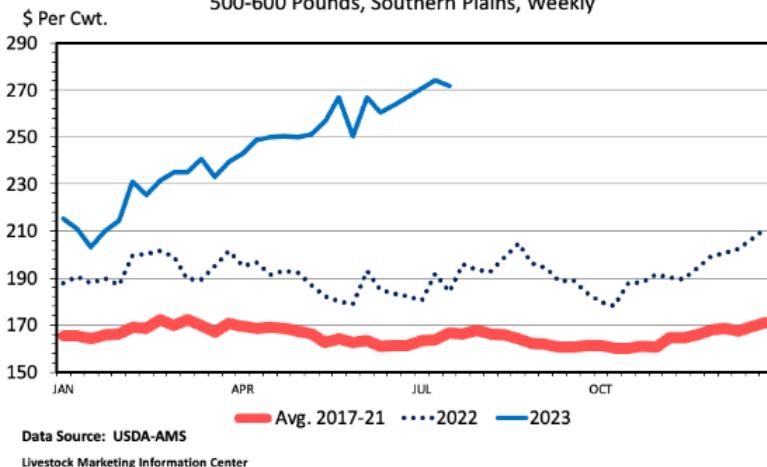
This dip is driven by seasonal production/supply patterns as prices for 700 to 900 pound steers are typically weakest during the late winter and early spring before rising into the summer months. Some of this seasonality can be seen in the 2017-2021 line on the chart below. It is also worth noting that the seasonal patterns vary across weight classes. 500-600 pound steers are typically weakest in the early fall, although those seasonal patterns can be muted during years when overall prices are on a strong up trend (like this year) or down trend.

There is still much optimism in cattle markets. As supplies have tightened and there is no indication that cattle numbers are expanding very soon. The latest USDA WASDE report projects U.S. beef production will be down 4 percent this year as compared to 2022 and their forecast for 2024 would be an additional 9 percent decline from the 2023 projection. The strong rally in cattle prices this year, and the expectations for strong prices as we move into 2024, are reflective of this underlying tighter cattle and beef supply situation.

MED. & LRG. #1 FEEDER STEER PRICES
700-800 Pounds, Southern Plains, Weekly



MED. & LRG. #1 STEER CALF PRICES
500-600 Pounds, Southern Plains, Weekly



The Markets

Cattle Market Report		For Weeks Ending On			% Chg Prev. Week	% Chg Prev. Year	Chg Prev Week
		7/28/23	7/21/23	7/29/22			
500-600 lb. Feeder Steers	Mississippi M/L #1-2	\$234.07	\$228.33	\$154.84	3%	51%	\$5.74
	Arkansas M/L #1	\$248.45	\$248.01	\$175.08	0%	42%	\$0.44
	Kentucky M/L #1-2	\$246.96	\$251.40	\$173.75	-2%	42%	(\$4.43)
	Oklahoma City M/L #1-2	\$260.18	\$251.14	\$181.28	4%	44%	\$9.04
	Alabama M/L #1	\$250.26	\$255.76	\$169.32	-2%	48%	(\$5.50)
	Tennessee M/L #1-2	\$245.98	\$247.14	\$170.78	0%	44%	(\$1.16)
700-800 lb. Feeder Steers	Mississippi M/L #1-2	\$257.52	\$262.03	\$183.14	-2%	41%	(\$4.52)
	Mississippi M/L #1-2	\$204.50	\$203.62	\$141.02	0%	45%	\$0.88
	Arkansas M/L #1	\$221.15	\$225.75	\$151.05	-2%	46%	(\$4.60)
	Kentucky M/L #1-2	\$222.24	\$230.76	\$163.54	-4%	36%	(\$8.53)
	Oklahoma City M/L #1-2	N/A	\$229.90	\$159.77	N/A	N/A	N/A
	Alabama M/L #1	\$217.46	\$223.95	\$145.35	-3%	50%	(\$6.49)
Negotiated Fed Steers	Tennessee M/L #1-2	\$228.92	\$225.99	\$151.13	1%	51%	\$2.92
	Missouri M/L #1-2	\$233.83	\$231.20	\$165.39	1%	41%	\$2.63
Boxed Beef Cutout	Live Price	\$184.81	\$186.19	\$139.83	-1%	32%	(\$1.38)
	Dressed Price	\$293.63	\$294.72	\$225.53	0%	30%	(\$1.09)
Boxed Beef Cutout	Choice Value, 600-900 lb.	\$303.32	\$304.07	\$268.44	0%	13%	(\$0.75)
	Select Value, 600-900 lb.	\$278.33	\$275.95	\$242.75	1%	15%	\$2.38

Futures Prices		7/28/23	7/21/23
Live Cattle	August	\$178.15	\$180.02
	October	\$179.60	\$181.90
	December	\$183.60	\$185.18
Feeder Cattle	August	\$245.60	\$245.93
	September	\$248.98	\$249.27
	October	\$251.00	\$251.00
Corn	September	\$5.21	\$5.27
	December	\$5.30	\$5.36

Source: CME Group

August Grazing Tips

- Do NOT graze cool-season pastures closer than 3 to 4 inches. This will help to conserve soil moisture and prevent overheating of the crowns.
- Graze warm season annuals or perennials to allow cool season grasses to recover and to avoid endophyte-infected fescue.
- After the first good rain in August, seed winter annuals (such as small grains, ryegrass, crimson clover, and brassicas) for late fall and early spring grazing.
- In mid-August to early September, exclude livestock from pastures to be stockpiled and apply 60 lb N/A and any needed P and K.

Photo by UK Ag Communications Services.

MONEY FOR FARM IMPROVEMENTS

KADF

KENTUCKY AGRICULTURAL DEVELOPMENT FUND

Eligible Investment Areas:

Agricultural Diversification
AgTech & Leadership Development
Large Animal - Small Animal
Farm Infrastructure
Fencing & On-Farm Water
Forage & Grain Improvement
Innovative Ag. Systems
On-Farm Energy
Poultry & Other Fowl
Value Added & Marketing

Administered by
Organization

address
Danville, KY 40422
(859) 238-7461

mary.lawrence@ky.nacdnet.net

COUNTY AGRICULTURAL INVESTMENT PROGRAM (CAIP)

Applications are available for Boyle County's CAIP to assist farmers in making important farm investments.

Application Period:

July 24 through August 14, 2023

No applications will be accepted before July 24 or after August 14

Application Availability:

Boyle County Conservation District
Monday – Thursday (8:00 a.m. – 4:00 p.m.)

For More Information:

Contact: Mary Lawrence at (859) 238-7461 or email mary.lawrence@ky.nacdnet.net or Elizabeth.chunglo@ky.nacdnet.net

All applications are scored, based on the scoring criteria set by the Kentucky Agricultural Development Board.

Dates to Know

August

1st- Ag Safety Night at 5:30 pm at Boyle County Cooperative Extension Office.

5th- Sausage Making Workshop starting at Boyle County Cooperative Extension Office at 10:00 am.

10th- Eden Shale Farm Infrastructure Tour

14th- Last day to turn in CAIP application to BCCD.

15th- Boyle County Cattlemen's Association Meeting

17th- Kentucky State University Third Thursday Thing

17th-27th- Kentucky State Fair

24th- Boyle County Comprehensive Plan Public Meeting at The Showroom at 6:00 pm.

September

4th- Labor Day! The Extension Office will be closed.

18th- Rinse N Return at Southern States (Danville).

19th- Beginning Farmer Series

21st- Beef Bash at C. Oran Little Research Center in Versailles, KY.

21st- Kentucky State University Third Thursday Thing

Boyle Co. Cattlemen's Association Meeting

CAIP
Approved

Where: Boyle County Cooperative Extension Office

When: August 15th, 2023

Time: 6:30 pm

Board meeting at 5:30 pm before the regular meeting. Joining us will be Dr. Jeff Lehmkuhler, UK Extension Beef Specialist speaking on Winter feeding with a limited hay supply. Please call (859)236-4484 to be added to the meal count.



CAIP
Approved



2023 Horses & Horsemen:

Equipment and Facilities for the Small Acreage Horse Owner

Tuesday, September 12 at 5:00pm

RSVP to Mercer County Extension Office: 859-734-4378

Schedule:

- 5:00—Registration and trade fair
- 6:00—Dinner by Mercer County Cattlemen’s Association
- 6:15—Welcome & Farm Overview by Desmar Stables
- 6:30—Tractor and Equipment Safety—Dale Dobson, KDA Farm Safety Program Administrator
- 7:00—What to consider in your farm layout, Dr. Bob Coleman
—Making Good Equipment Decisions, Dr. Morgan Hayes



DESMAR STABLES

Location:

Desmar Stables LLC
at Crockett Springs Farm
685 Handy Pike
Harrodsburg, KY 40330



College of Agriculture,
Food and Environment
Cooperative Extension Service



Ag Equine Programs
College of Agriculture, Food and Environment

Cooperative Extension Service

Agriculture and Natural Resources
Family and Consumer Sciences
4-H Youth Development
Community and Economic Development

MARTIN-GATTON COLLEGE OF AGRICULTURE, FOOD AND ENVIRONMENT

Educational programs of Kentucky Cooperative Extension serve all people regardless of economic or social status and will not discriminate on the basis of race, color, ethnic origin, national origin, creed, religion, political belief, sex, sexual orientation, gender identity, gender expression, pregnancy, marital status, genetic information, age, veteran status, physical or mental disability or reprisal or retaliation for prior civil rights activity. Reasonable accommodation of disability may be available with prior notice. Program information may be made available in languages other than English. University of Kentucky, Kentucky State University, U.S. Department of Agriculture, and Kentucky Counties, Cooperating. Lexington, KY 40506



Disabilities
accommodated
with prior notification.

EDEN SHALE FARM INFRASTRUCTURE TOUR

THURSDAY, AUGUST 10TH

8:00 AM

The Eden Shale Farm is managed by Kentucky Beef Network. Infrastructure that can be seen at the farm during the tour includes innovative feeding and watering systems, water harvesting systems, shade structures and cattle handling facilities.



You **must RSVP** as van seating is limited by calling (859)236-4484 or email Tyler.ray@uky.edu. If you do not wish to ride in the van but still want to attend the address is:
245 Eden Shale Road, Owenton, KY 40359

This qualifies for CAIP Educational requirements.

Cooperative Extension Service
Agriculture and Natural Resources
Family and Consumer Sciences
4-H Youth Development

Educational programs of Kentucky Cooperative Extension serve all people regardless of economic or social status and will not discriminate on the basis of race, color, ethnic origin, national origin, creed, religion, political belief, sex, sexual orientation, gender identity, gender expression, pregnancy, marital status, genetic information, age, veteran status, or physical or mental disability. University of Kentucky, Kentucky State University, U.S. Department of Agriculture, and Kentucky Counties, Cooperating.



Disabilities
accommodated

BEGINNING FARMER Series

RECENTLY PURCHASED A FARM OR A PIECE OF LAND AND
HAVE THOUGHT, NOW WHAT?
JOIN US FOR SESSIONS ON CREATING A BUSINESS PLAN,
FUNDING OPTIONS, FARM LAYOUT, AND MACHINERY NEEDS.

A MEAL WITH BE SERVED AT ALL SESSIONS.

SEPTEMBER 19

Business Plans & Record Keeping

OCTOBER 10

FSA & Funding Options

NOVEMBER 28

Farm Design & LayOut

DECEMBER 12

Meeting your Machinery Needs

AT BOYLE COUNTY COOPERATIVE EXTENSION OFFICE

CALL (859)236-4484 TO SIGN UP!

FREE!

**CAIP
Approved**



Cooperative Extension Service
Agriculture and Natural Resources
Family and Consumer Sciences
4-H Youth Development
Community and Economic Development

Educational programs of Kentucky Cooperative Extension serve all people regardless of economic or social status and will not discriminate on the basis of race, color, ethnic origin, national origin, creed, religion, political belief, sex, sexual orientation, gender identity, gender expression, pregnancy, marital status, genetic information, age, veteran status, or physical or mental disability. University of Kentucky, Kentucky State University, U.S. Department of Agriculture, and Kentucky Counties, Cooperating.



Disabilities
accommodated
with prior notification.



THIRD THURSDAY THING

Every third Thursday of the month,
January through November, at 10 a.m. ET

~~January 19: USDA Farm and Home Loans | Natural Resource Management~~

~~February 16: Organic Agriculture~~

~~March 16: Small Ruminants~~

~~April 20: Pest Control | NPDES Programs~~

~~May 19: Aquaculture~~

~~June 15: Farmers Markets | Juneteenth Celebration~~

~~July 20: Raising | Pastured Poultry~~

August 17: Sustainable and Organic Agriculture

September 21: Pawpaw

October 19: Small Ruminants

November 16: Small Farms Conference

Join us in person at the Harold R. Benson
Research and Demonstration Farm or online
at [YouTube.com/kysuag/live](https://www.youtube.com/kysuag/live)



**KENTUCKY STATE
UNIVERSITY**
Cooperative Extension Program

Sausage Making Workshop

**August 5th, 2023
10:00 am**

**at
Boyle County
Extension Office**

Sign up by calling (859)236-4484

Join us for the sausage
making class and
workshop. This will cover
basics to sausage making
and food safety. The
workshop will follow the
class. We will be making
breakfast sausage. While
the class is not limited
the workshop is limited
to 15 people.

Upcoming Events

Recipe

Roast Venison



Roast Venison

- 4 pounds venison roast
- 1 teaspoon salt
- 2 tablespoons flour
- 2 tablespoons oil
- ¼ teaspoon garlic powder
- 1 onion, sliced
- 2 tablespoons brown sugar
- ¼ cup lemon juice
- 4 cups low-sodium canned tomatoes
- ¼ teaspoon browning sauce, if desired

Season roast with salt and roll in flour. Brown on all sides in hot oil in a heavy skillet. Place in a slow cooker and add remaining ingredients. Cook on low for 10 hours or on high for 6 hours.

Leftovers ideas: cold sandwiches, heated in barbecue sauce for hot sandwiches, or diced into soup or stew.

Yield: 12 servings

Adapted from Venison Recipe Collection, Compiled by Becky Nash, Extension Agent for Family and Consumer Sciences

Nutrition Facts

12 servings per container
Serving size 5 ounces (255g)

Amount per serving
Calories 250

	% Daily Value*
Total Fat 6g	8%
Saturated Fat 2g	10%
Trans Fat 0g	
Cholesterol 130mg	43%
Sodium 300mg	13%
Total Carbohydrate 10g	4%
Dietary Fiber 2g	7%
Total Sugars 5g	
Includes 2g Added Sugars	4%
Protein 36g	
Vitamin D 0mcg	0%
Calcium 11mg	0%
Iron 5mg	30%
Potassium 498mg	10%

* The % Daily Value (DV) tells you how much a nutrient in a serving of food contributes to a daily diet. 2,000 calories a day is used for general nutrition advice.

Soil Testing

Just a reminder Boyle County Extension Office offers **FREE** soil testing to anyone in the county up to 40 samples per person per year. For soil sample bags or more information call the Boyle County Extension Office at (859)236-4484.

Dead Animal Removal

The Boyle County Conservation District and the Boyle County Fiscal Court sponsors the removal of deceased animals in Boyle County. If you have a deceased animal **call (859) 238-1137**, Monday through Friday from 8:00 am to 4:30 pm. The deceased animal needs to be in an accessible area for pick up.



Be sure to follow the **Boyle Co. Agriculture & Natural Resources** on Facebook to stay up to date on events, classes and surveys.



Tyler Ray

Tyler Ray, County Extension Agent for Agriculture and Natural Resources

Cooperative Extension Service
Agriculture and Natural Resources
Family and Consumer Sciences
4-H Youth Development
Community and Economic Development

Educational programs of Kentucky Cooperative Extension serve all people regardless of economic or social status and will not discriminate on the basis of race, color, ethnic origin, national origin, creed, religion, political belief, sex, sexual orientation, gender identity, gender expression, pregnancy, marital status, genetic information, age, veteran status, or physical or mental disability. University of Kentucky, Kentucky State University, U.S. Department of Agriculture, and Kentucky Counties, Cooperating.
LEXINGTON, KY 40546



Disabilities accommodated with prior notification.

BEEF BASH 2023

DATE: Thursday, September 21, 2023

WHERE: University of Kentucky
C. Oran Little Research Center
1051 Midway Rd.
Versailles, KY 40383

TIME: Registration starts at 1:30 PM EST
Programs start at 2:00 PM EST

MAKE PLANS TO JOIN US!

VISIT WITH:
COMMERCIAL EXHIBITORS
EDUCATIONAL EXHIBITS &
DEMONSTRATIONS
UK PERSONNEL & ADMINISTRATORS
KCA LEADERSHIP & STAFF

Tickets are \$15 and includes meal. To Pre-register, go to [Eventbrite.com](https://www.eventbrite.com) and search Beef Bash 2023

CAIP
Approved